



CITY OF MIAMI
CAPITAL IMPROVEMENTS PROGRAM

ARMBRISTER PARK-NEW SPORT FIELD

236 GRAND AVENUE,
CORAL GABLES, FL. 33133

DATE: JAN 06 2014
DESIGN: JC
DRAWN: MP
CHECKED: JC
REVISIONS:

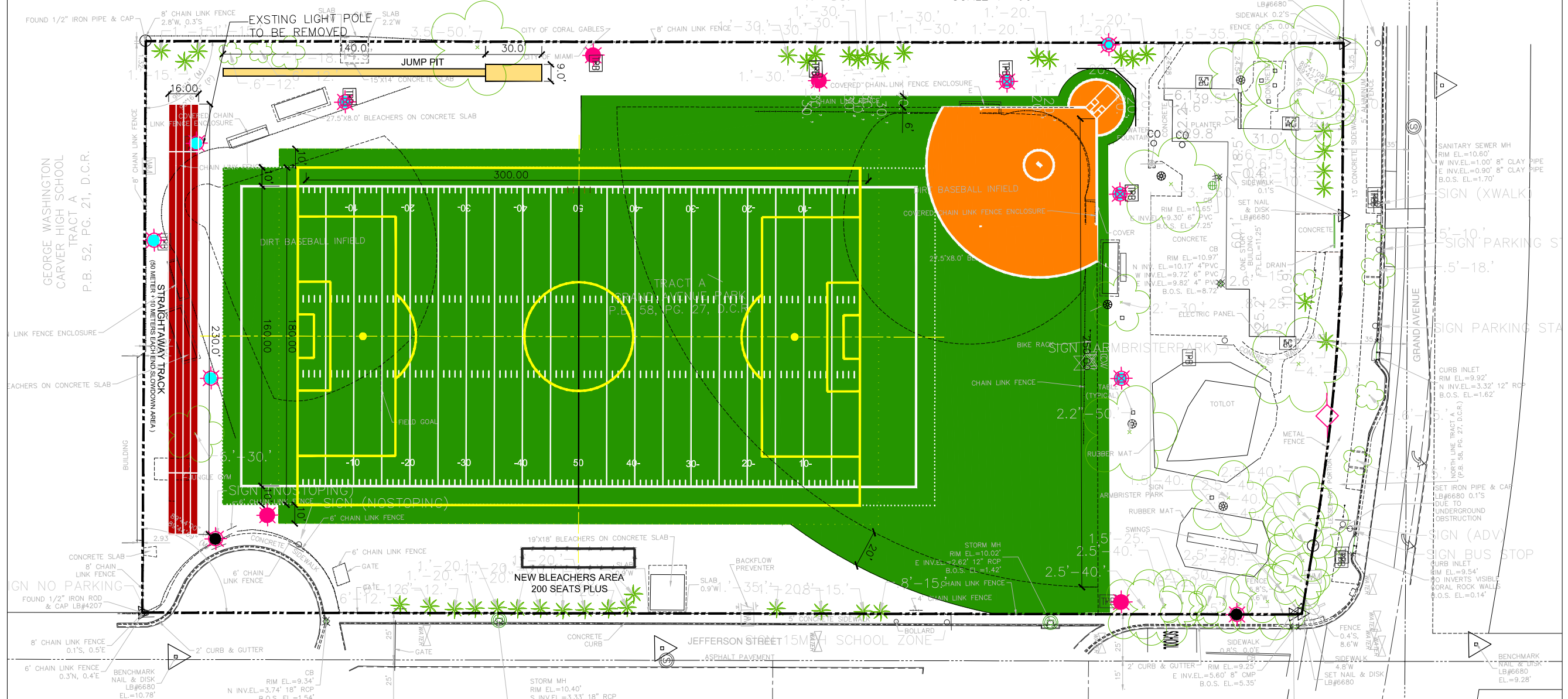
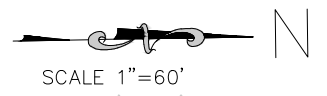
JOB No. B-40463
FILE:

SCALE: AS SHOWN

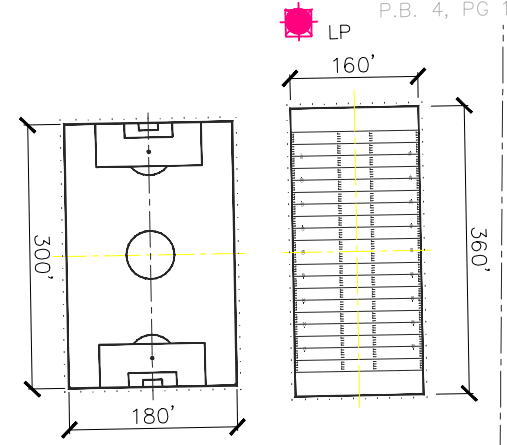
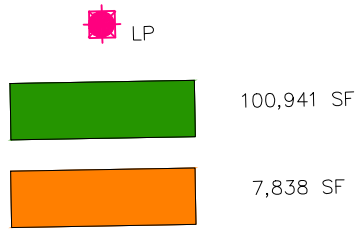
DESIGN CRITERIA DRAWING

OF 1 SHEETS 1

TRACT 4
GOLDEN GATE
P.B. 21, PG. 46, D.C.R.



- SMALL LIGHT POLE (45)
- NO LIGHTS
- TALL LIGHT POLE (90-110)



BLOCK 3
KINGSWAY
P.B. 48, PG. 98, D.C.R.

NOT SUBDIVIDED

BLOCK 3

ST. ALBANS PARK
P.B. 4, PG 173, D.C.R.

BLOCK 2

GEORGE WASHINGTON
CARVER HIGH SCHOOL
TRACT A
P.B. 52, PG. 21, D.C.R.

TRACT A
GRAND AVENUE PARK
P.B. 58, PG. 27, D.C.R.

GN NO PARKING
FOUND 1/2" IRON ROD & CAP LB#4207

BENCHMARK
NAIL & DISK
LB#6680
EL=10.78

STORM MH
RIM EL=10.40'
S INV.EL=3.33' 18" RCP
9.9'-8'-EL=1.45'
(POSSIBLE NORTH INVERT - INACCESSIBLE)

SIDEWALK
4.8' W
SET NAIL & DISK
LB#6680

BENCHMARK
NAIL & DISK
LB#6680
EL=9.28'